

# JUVÉDERM® VOLUX® XC



## JAW INSPIRING

Actual patient treated with JUVÉDERM® VOLUMA® XC in the cheeks, JUVÉDERM® VOLBELLA® XC in the undereye hollows and lips, and JUVÉDERM® VOLUX® XC in the jawline. *Results may vary.*

### AN AWARD-WINNING INNOVATION



#### JUVÉDERM® Injectable Gel Fillers Important Information

##### APPROVED USES

JUVÉDERM® VOLUX® XC injectable gel is for deep injection to improve moderate to severe loss of jawline definition in adults over the age of 21.

JUVÉDERM® VOLUMA® XC injectable gel is for deep injection in the cheek area to correct age-related volume loss and for augmentation of the chin region to improve the chin profile in adults over 21.

JUVÉDERM® VOLLURE® XC, JUVÉDERM® Ultra Plus XC, and JUVÉDERM® Ultra XC injectable gels are for injection into the facial tissue for the correction of moderate to severe facial wrinkles and folds, such as nasolabial folds. JUVÉDERM® VOLLURE® XC injectable gel is for adults over 21.

**Please see additional Approved Uses and Important Safety Information inside.**

# JUVÉDERM® VOLUX® XC



## **THE FIRST AND ONLY HA FILLER SPECIFICALLY DESIGNED FOR IMPROVING JAWLINE DEFINITION**

**Hyaluronic acid (HA) is a naturally occurring sugar** found in the body that keeps the skin hydrated. JUVÉDERM® VOLUX® XC contains a modified form of HA.



## **IMMEDIATE AND LASTING DEFINITION**

Most people saw **immediate** improvement in jawline definition that lasted through 1 year.\*



## **SMOOTH, NATURAL-LOOKING, LONG-LASTING RESULTS**

**94%** of people **were satisfied** with their treatment results.†

\*70% of participants in the treatment group showed improvement in jawline definition at 6 months, with 61% showing long-lasting results through 1 year with optimal treatment.

†At 1-month follow-up, with optimal treatment.

**LOVE YOUR LOOK  
FROM EVERY ANGLE**

More and more people are interested in improving their jawline. In the past 5 years alone, Google searches for “jawline filler” have increased by 10x.\* However, a nonsurgical hyaluronic acid (HA) filler option to improve moderate to severe loss of jawline definition didn’t exist—**until now.**

\*2017-2021 data.

### JUVÉDERM® Injectable Gel Fillers Important Information (continued)

#### APPROVED USES (continued)

JUVÉDERM® Ultra XC injectable gel is also for injection into the lips and perioral area for lip augmentation in adults over 21.

JUVÉDERM® VOLBELLA® XC injectable gel is for injection into the lips for lip augmentation and correction of perioral lines, and for injection into the undereye hollows to improve the appearance of undereye hollows in adults over the age of 21.



Actual patient treated with JUVÉDERM® VOLUMA® XC in the cheeks, JUVÉDERM® Ultra XC in the lips, and JUVÉDERM® VOLUX® XC in the jawline. *Results may vary.*

**Areas of the face are interrelated and an aesthetic specialist may recommend treatment in one area before treating another.**

Ask your aesthetic specialist for a full-face consultation so you can work together to customize your JUVÉDERM® journey.

### IMPORTANT SAFETY INFORMATION

#### Are there any reasons why I should not receive any JUVÉDERM® formulation?

Do not use these products if you have a history of multiple severe allergies or severe allergic reactions (anaphylaxis), if you are allergic to lidocaine or the Gram-positive bacterial proteins used in these products, or if you have had previous allergic reactions to hyaluronic acid fillers.

**Please see additional Important Safety Information on the following pages.**

# BEFORE & AFTER

BEFORE



AFTER



JAZZ, 20s

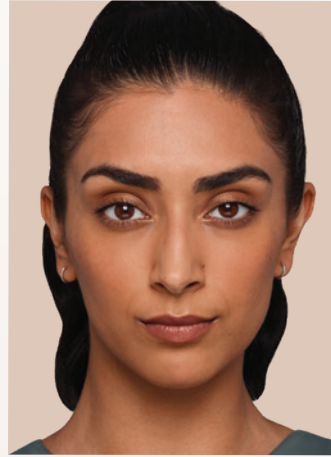
Jazz was treated with 4.0 mL of JUVÉDERM® VOLUMA® XC in the cheeks, 1.2 mL of JUVÉDERM® Ultra XC in the lips, and 4.1 mL of JUVÉDERM® VOLUX® XC in the jawline. **Results may vary.**

## IMPORTANT SAFETY INFORMATION (continued)

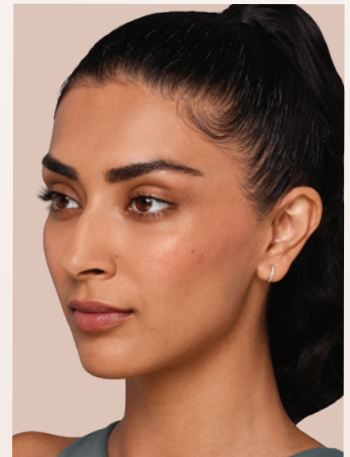
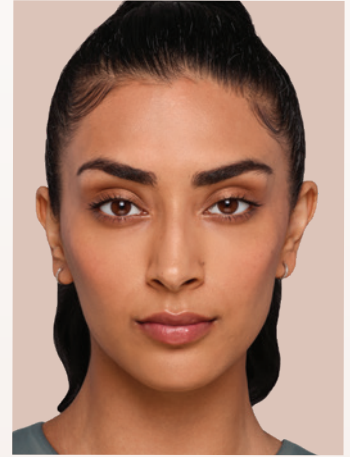
### What warnings should my doctor advise me about?

- One of the risks with using dermal fillers is the unintentional injection into a blood vessel. The chances of this happening are very small, but if it does happen, the complications can be serious and may be permanent. These complications, which have been reported for facial injections, can include vision abnormalities, blindness, stroke, temporary scabs, or permanent scarring of the skin. Most of these events are irreversible.

BEFORE



AFTER



JASKIRAN, 20s

Jaskiran was treated with 3.2 mL of JUVÉDERM® VOLUMA® XC in the cheeks, 1.7 mL of JUVÉDERM® VOLBELLA® XC in the undereye hollows, 1.0 mL of JUVÉDERM® VOLLURE® XC in the smile lines, 0.95 mL of JUVÉDERM® Ultra XC in the lips, 1.0 mL of JUVÉDERM® VOLUX® XC in the jawline, and 1.0 mL of JUVÉDERM® VOLUMA® XC in the chin. **Results may vary.**

- If you have changes in your vision, signs of a stroke (including sudden difficulty speaking, numbness or weakness in your face, arms or legs, difficulty walking, face drooping, severe headache, dizziness, or confusion), white appearance of the skin, or unusual pain during or shortly after treatment, you should notify your health care practitioner immediately.
- The use of dermal fillers where skin sores, pimples, rashes, hives, cysts, or infections are present should be postponed, as this may delay healing or make skin problems worse.

**Please see additional Important Safety Information on the following pages.**

# BEFORE & AFTER

BEFORE



AFTER



VICTORIA, 30s

Victoria was treated with 2.5 mL of JUVÉDERM® VOLUMA® XC in the cheeks, 2.2 mL of JUVÉDERM® VOLBELLA® XC in the undereye hollows, 0.6 mL of JUVÉDERM® VOLBELLA® XC in the lips, and 4.0 mL of JUVÉDERM® VOLUX® XC in the jawline. **Results may vary.**

## IMPORTANT SAFETY INFORMATION (continued)

### What warnings should my doctor advise me about? (continued)

- The effectiveness of removal of any dermal filler has not been studied.

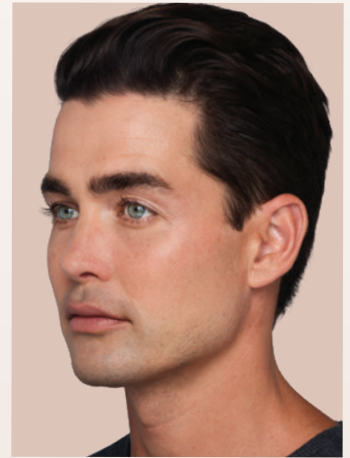
### What precautions should my doctor advise me about?

- JUVÉDERM® VOLBELLA® XC should only be injected into undereye hollows by doctors who have completed the necessary training for this treatment area. To find a doctor, visit [Juvederm.com/find-a-specialist](http://Juvederm.com/find-a-specialist). Doctors who complete the training will be listed with a symbol

BEFORE



AFTER



STERLING, 30s

Sterling was treated with 4.3 mL of JUVÉDERM® VOLUMA® XC in the cheeks, 1.0 mL of JUVÉDERM® VOLBELLA® XC in the undereye hollows, and 3.6 mL of JUVÉDERM® VOLUX® XC in the jawline. **Results may vary.**

- The safety of these products for use during pregnancy or while breastfeeding has not been studied
- The safety of JUVÉDERM® VOLUMA® XC has not been studied in patients under 35 years or over 65 years for cheek augmentation, or under 22 years and over 80 years for chin augmentation. The safety of JUVÉDERM® VOLUX® XC, JUVÉDERM® VOLLURE® XC and JUVÉDERM® VOLBELLA® XC has not been studied in patients under 22 years, and the safety of JUVÉDERM® Ultra Plus XC and JUVÉDERM® Ultra XC has not been studied in patients under 18 years

**Please see additional Important Safety Information on the following pages.**

# BEFORE & AFTER

BEFORE



AFTER



MYKOL, 40s

Mykol was treated with 7.0 mL of JUVÉDERM® VOLUX® XC in the jawline and 4.0 mL of JUVÉDERM® VOLUMA® XC in the chin. **Results may vary.**

In the JUVÉDERM® VOLUMA® XC clinical study in the chin, the main measure for clinical study success was not met in male patients, however their satisfaction was still high.

## IMPORTANT SAFETY INFORMATION (continued)

### What precautions should my doctor advise me about? (continued)

- The safety and effectiveness of treatment with JUVÉDERM® products in anatomical regions outside of their approved uses have not been established in clinical studies
- If you have a history of excessive scarring (thick, hard scars) or pigmentation disorders, treatment in these patients has not been studied and may result in additional scars or changes in pigmentation

BEFORE



AFTER



CHERYL, 60s

Cheryl was treated with 5.4 mL of JUVÉDERM® VOLUMA® XC in the cheeks, 1.5 mL of JUVÉDERM® VOLBELLA® XC in the undereye hollows, 1.5 mL of JUVÉDERM® VOLBELLA® XC in the lips, 3.7 mL of JUVÉDERM® VOLLURE® XC in the smile lines, and 4.15 mL of JUVÉDERM® VOLUX® XC in the jawline. **Results may vary.**

- If you are planning other procedures including laser treatments or a chemical peel, there is a possible risk of inflammation at the treatment site if these procedures are performed closely before or after JUVÉDERM® injectable gel treatment

**Please see additional Important Safety Information on the following pages.**



Actual patient treated with JUVÉDERM® VOLUX® XC in the jawline. *Results may vary.*

Nearly **90%** of people\* would recommend JUVÉDERM® VOLUX® XC to a friend 6 months after treatment.

\*131 of 146 patients in the clinical study.

**IMPORTANT SAFETY INFORMATION (continued)**

**What precautions should my doctor advise me about? (continued)**

- Tell your doctor if you are on therapy used to reduce your body's natural defense system (such as steroids, chemotherapy, and medicines to treat autoimmune diseases, HIV, and AIDS), as these may increase your risk of infection; and medications that can prolong bleeding (such as aspirin, ibuprofen, or other blood thinners), as these may result in increased bruising or bleeding at the injection site.
- Avoid applying makeup for 12 hours after treatment and minimize strenuous exercise, exposure to extensive sun or heat, and alcoholic beverages within the first 24 hours following treatment, as these may cause temporary redness, swelling, and/or itching at the injection site
- JUVÉDERM® VOLUMA® XC was not studied in patients with significant loose skin of the chin, neck, or jaw
- The effect of JUVÉDERM® VOLUMA® XC injection into the chin on facial hair growth has not been studied
- Patients who experience skin injury near the site of JUVÉDERM® VOLUMA® XC injection may be at a higher risk for adverse events

JUVÉDERM® COLLECTION OF FILLERS

**#1 CHOSEN\* REQUESTED† RECOMMENDED FILLER BRAND BY PATIENTS‡ AND PROVIDERS§**



**Allē**

Sign up at [Alle.com](http://Alle.com) today and start earning rewards when you are treated with the JUVÉDERM® Collection of Fillers.



\*Based on January 2024 healthcare provider survey data (n = 886).

†Based on an October to November 2023 survey of females and males recruited from market research panels who have had filler treatment in the past 2 years (n = 81).

‡Among leading filler brands in survey data collected January to April 2023, 70% of females treated with a JUVÉDERM® filler in the last year were likely to recommend it to friends interested in dermal fillers (n = 356).

§Among leading brands in survey data collected February to April 2023, 64% of healthcare providers who use JUVÉDERM® fillers in their practice are likely to recommend it to colleagues (n = 747).

- Tell your doctor if you have already been injected with dermal fillers in the same area as the one(s) you are about to be treated for. This information helps your doctor decide when and whether you should get treatment

**What are possible side effects of treatment?**

The most commonly reported side effects with JUVÉDERM® injectable gels were redness, swelling, pain, tenderness, firmness, lumps/bumps, bruising, discoloration, and itching. For JUVÉDERM® VOLBELLA® XC, dryness was also reported.

These side effects are consistent with other facial injection procedures and most will resolve within 30 days. Your doctor may choose to treat side effects persisting longer with antibiotics, steroids, or hyaluronidase (an enzyme that breaks down hyaluronic acid).

As with all skin injection procedures, there is a risk of infection.

**To report a side effect with any product in the JUVÉDERM® Collection, please call the Allergan® Product Support Department at 1-877-345-5372. Please also visit [Juvéderm.com](http://Juvéderm.com) or talk to your doctor for more information.**

Products in the JUVÉDERM® Collection are available only by a licensed physician or properly licensed practitioner.

# JUVÉDERM® VOLUX® XC



Actual patient treated with JUVÉDERM® VOLUX® XC in the jawline. *Results may vary.*

***THE FIRST AND ONLY HA FILLER SPECIFICALLY DESIGNED  
FOR IMPROVING JAWLINE DEFINITION***

***IMMEDIATE AND LASTING DEFINITION***

***SMOOTH, NATURAL-LOOKING, LONG-LASTING RESULTS***

***Ask your licensed specialist about JUVÉDERM® VOLUX® XC  
today, or visit [JUVEDERM.com](https://www.juvederm.com) to learn more.***

**Allergan  
Aesthetics**  
an AbbVie company

© 2024 AbbVie. All rights reserved. JUVÉDERM and its design are trademarks of Allergan Holdings France SAS, an AbbVie company, or its affiliates. All other trademarks are the property of their respective owners. JUV156052-v2 04/24 025121